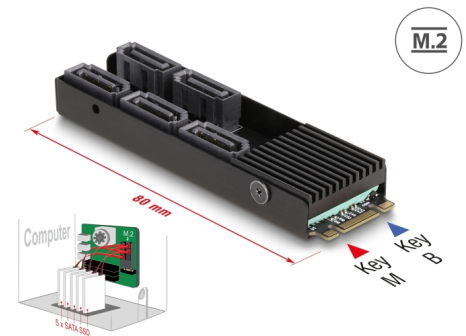


# Delock Converter M.2 2280 Key B+M male to 5 x SATA with heat sink

## Description

This converter by Delock expands the system by **five SATA ports**. Different devices such as SSDs, hard drives, DVD-drives etc. can be connected to the converter. The **heat sink** around the M.2 module ensures an **optimal temperature during operation**.



**Item no. 64051**

EAN: 4043619640515

Country of origin: Taiwan,  
Republic of China

Package: Retail Box

## Technical details

- Connectors:
  - 1 x 59 pin M.2 key B+M male
  - 5 x SATA 6 Gb/s 7 pin plug
- Chipset: JMicron JMB585
- Interface: PCIe
- Form factor: M.2 2280
- Suitable for M.2 slot with key M or B based on PCIe
- Data transfer rate up to 6 Gb/s
- Supports Native Command Queuing (NCQ)
- Supports S.M.A.R.T.
- Supports TRIM
- Supports DevSleep
- Hot Swap
- Bootable
- Dimensions (LxWxH): ca. 80 x 23 x 10 mm

## System requirements

- Linux Kernel 5.11 or above
- Windows 8.1/8.1-64/10/10-64/11
- A free M.2 key M or key B slot

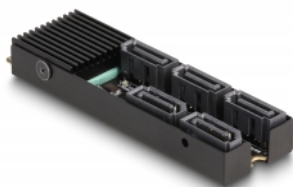
---

## Package content

- Converter
- 2 x foam pad
- User manual

---

## Images



## General

Function:	Hot Swap bootable TRIM S.M.A.R.T.
Supported operating system:	Windows 10 32-Bit Windows 10 64-Bit Windows 8.1 32-Bit Windows 8.1 64-Bit Windows 11 Linux Kernel 5.11 or above
Slot:	PCIe

## Interface

Connector 1:	1 x 59 pin M.2 key B+M male
Connector 2:	5 x SATA 6 Gb/s 7 pin plug

## Technical characteristics

Chipset:	JMicron JMB585
Data transfer rate:	6 Gb/s